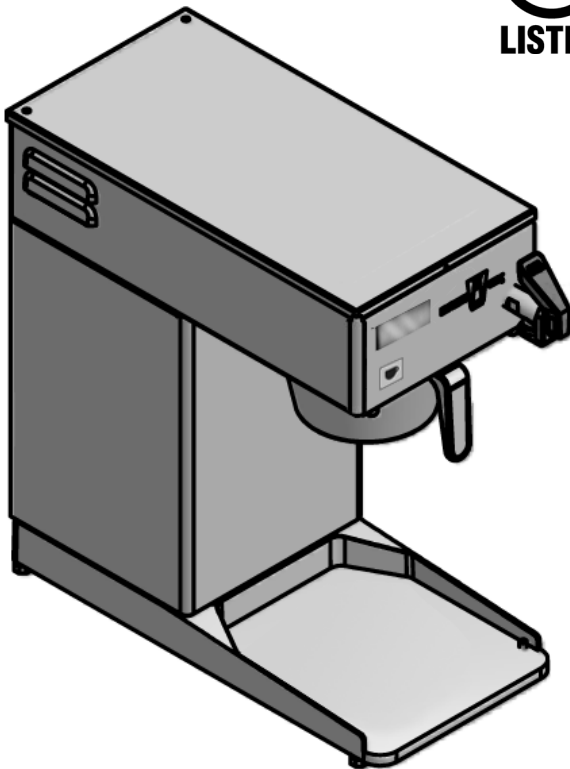




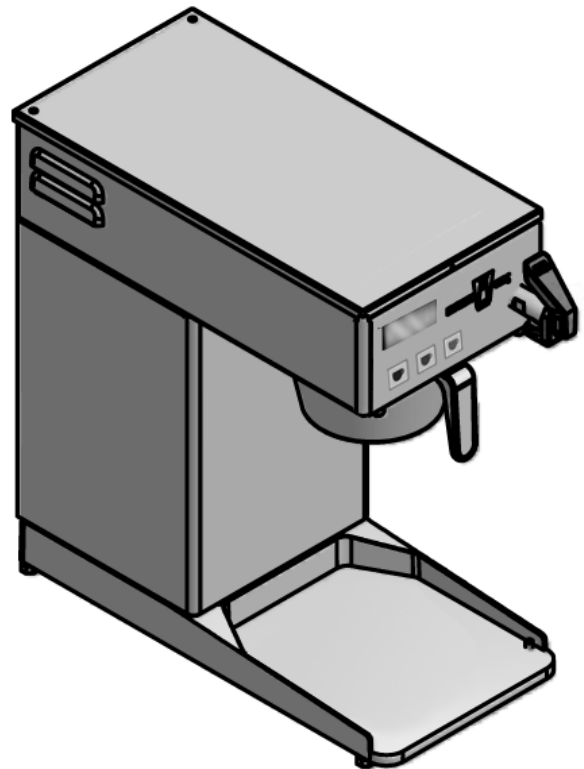
Owners Manual

Model# ADJ and ADJ3

Adjustable height Airpot and Thermal Server Brewer



ADJ



ADJ3

WARRANTY DESCRIPTION

All electrical equipment manufactured by Brew-Tek is warranted against defects in materials and workmanship for a period of one year from the date of original installation or eighteen (18) months from the date of shipment from our factory, whichever comes first, and is for the benefit of the original purchaser, except that:

THE FOREGOING OBLIGATION IS EXPRESSLY GIVEN IN LIEU OF ANY OTHER WARRANTIES, EXPRESSED OR IMPLIED, INCLUDING ANY IMPLIED WARRANTY OF MERCHANTABILITY OR FITNESS FOR A PARTICULAR PURPOSE, WHICH ARE HEREBY EXCLUDED. Brew-Tek SHALL NOT BE LIABLE FOR INDIRECT, INCIDENTAL OR CONSEQUENTIAL DAMAGES OR LOSSES FROM ANY CAUSE WHATSOEVER.

This warranty is void if it is determined that upon inspection by an Authorized Service Agency that the equipment has been modified, misused, misapplied, improperly installed, or damaged in transit or by fire, flood or act of God. It also does not apply if the serial nameplate has been removed or unauthorized service personnel perform service. The prices charged by Brew-Tek for its products are based upon the limitations in this warranty. Seller's obligation under this warranty is limited to the repair of defects without charge by a Brew-Tek Authorized Service Agency or one of its sub-agencies. This service will be provided on customer's premises for non-portable models. Portable models (a device with a cord and plug) must be taken or shipped to the closest Authorized Service Agency, transportation charges prepaid, for services. In addition to restrictions contained in this warranty, specific limitations are shown below (Additional Warranty Exclusions). Brew-Tek Authorized Service Agencies are located in principal cities.

This warranty is valid in the United States and Canada, void elsewhere. Please consult your classified telephone directory or your food service equipment dealer.

NOTE: For your protection, please note that equipment in this shipment was carefully inspected and packaged by skilled personnel before leaving the factory. Upon acceptance of this shipment, the transportation company assumes full responsibility for its safe delivery.

SHIPPING DAMAGE CLAIMS PROCEDURE

IF SHIPMENT ARRIVES DAMAGED:

1. **VISIBLE LOSS OR DAMAGE:** Be certain that any visible loss or damage is noted on the freight bill or express receipt, and that the note of loss or damage is signed by the delivery person.
2. **FILE CLAIM FOR DAMAGE IMMEDIATELY:** Regardless of the extent of the damage.
3. **CONCEALED LOSS OR DAMAGE:** if damage is unnoticed until the merchandise is unpacked, notify the transportation company or carrier immediately, and file "CONCEALED DAMAGE" claim with them. This must be done within fifteen (15) days from the date the delivery was made to you. Be sure to retain the container for inspection.

Brew-Tek cannot assume liability for damage or loss incurred in transit. We will, however, at your request, supply you with the necessary documents to support your claim.

SERVICE POLICY AND PROCEDURE GUIDE ADDITIONAL WARRANTY EXCLUSIONS

1. Resetting of safety thermostats, circuit breakers, overload protectors, or fuse replacements unless warranted conditions are the cause.
2. All problems due to operation at voltages other than specified on equipment nameplates; conversion to correct voltage must be the customer's responsibility.
3. All problems due to electrical connections not made in accordance with

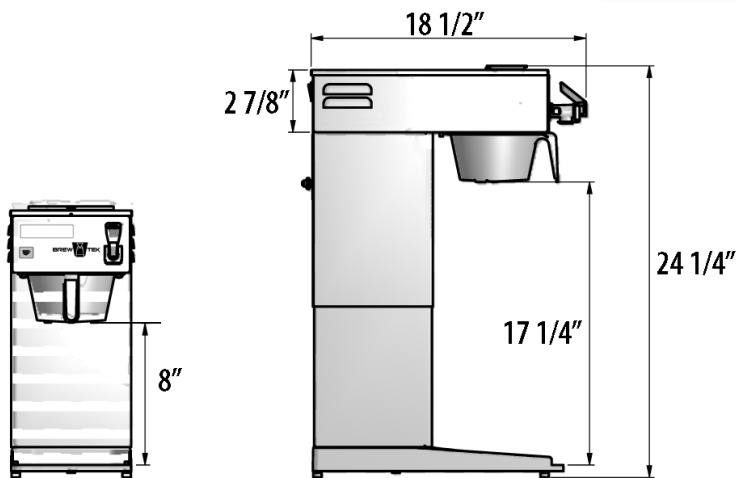
- electrical code requirements and wiring diagrams supplied with the equipment.
4. Replacement of items subject to normal wear, to include such items as knobs and light bulbs. Normal maintenance functions including adjustment of thermostats, microswitches, and replacement of fuses and indicating lights are not covered under warranty.
5. All problems due to inadequate water supply, such as fluctuating, or high or low water pressure.
6. All problems due to mineral/calcium deposits, or contamination from chlorides/chlorines. De-liming is considered a preventative maintenance function and is not covered by warranty.
7. Full use, care and maintenance instructions are supplied with each machine. Those miscellaneous adjustments noted are customer responsibility. Proper attention will prolong the life of the machine.
8. Travel mileage is limited to sixty (60) miles from an authorized Service Agency or one of its sub-agencies.
9. All labor shall be performed during normal working hours. Overtime premium shall be charged to the customer.
10. All genuine Brew-Tek replacement parts are warranted for ninety (90) days from date of purchase on non-warranted equipment. Any use of non-genuine Brew-Tek parts completely voids any warranty.
11. Installation, labor and job check-out are not considered warranty.
12. Charges incurred by delays, waiting time or operating restrictions that hinder the service technicians ability to perform services are not covered by warranty. This includes institutional and correctional facilities

TABLE OF CONTENTS

WARRANTY STATEMENT	2
SPECIFICATIONS	3
FEATURES & OPERATING CONTROLS	3
PRECAUTIONS & GENERAL INFORMATION	3
INSTALLATION INSTRUCTIONS	4
REPLACEMENT PARTS	6
BREWING COFFEE	8
CLEANING INSTRUCTIONS	8

Thank You for purchasing this Brew-Tek appliance. Proper installation, professional operation and consistent maintenance of this appliance will ensure that it gives you the very best performance and a long, economical service life. This manual contains the information needed to properly install this appliance, and to use, care for and maintain or repair the appliance in a manner which will ensure its optimum performance.





Shown at lowest height.

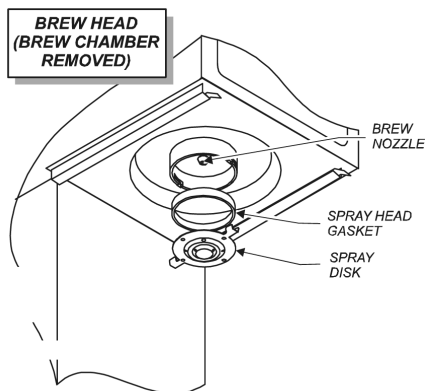
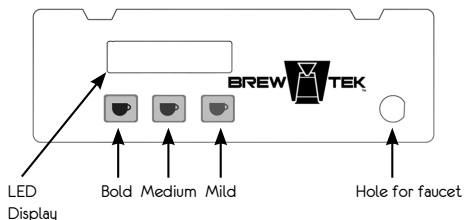
Shown at highest height.

110 Volts, 1750 Watts, 14.5 AMPs, NEMA-5-15P

ADJ



ADJ3



WARNING: ELECTRIC SHOCK HAZARD

All servicing requiring access to non-insulated components must be performed by qualified service personnel. Do not open any access panels which require the use of tools. Failure to heed this warning can result in electrical shock.

WARNING: INJURY HAZARD

All installation procedures must be performed by qualified personnel with full knowledge of all applicable electrical and plumbing codes. Failure could result in property damage and personal injury.

WARNING: ELECTRIC SHOCK HAZARD

Brewer must be properly grounded to prevent possible shock hazard. DO NOT assume a plumbing line will provide such a ground. Electrical shock will cause death or serious injury.

WARNING: BURN HAZARD

This appliance dispenses very hot liquid. Serious bodily injury from scalding can occur from contact with dispensed liquids.

This appliance is intended for commercial use only.

This appliance is intended for use to brew beverage products for human consumption. No other use is recommended or authorized by the manufacturer or its agents.

This appliance is intended for use in commercial establishments, where all operators are familiar with the appliance use, limitations and associated hazards. Operating instructions and warnings must be read and understood by all operators and users.

The following trouble shooting, component views and parts lists are included for general reference, and are intended for use by qualified service personnel.

This manual should be considered a permanent part of this appliance. The manual must remain with the appliance if it is sold or moved to another location.

CAUTION: EQUIPMENT DAMAGE

DO NOT plug in or energize this appliance until all Installation Instructions are read and followed. Damage to the Brewer will occur if these instructions are not followed.

CAUTION: BURN HAZARD

Exposed surfaces of the appliance, brew chamber and Airport or Server may be HOT to the touch, and can cause serious burns.



READ THIS CAREFULLY BEFORE STARTING THE INSTALLATION

Unpack the unit. Inspect all components for completeness and condition. Ensure that all packing materials have been removed from the unit. Verify that the Spray Head Gasket and Spray Disk are properly installed.

HEIGHT ADJUSTMENT

CAUTION: Brewer height adjustment changes are to be made only by a factory qualified technician

- MEASURE THE HEIGHT OF THE VESSEL BEING USED TO RECEIVE THE BREWED COFFEE.
- REMOVE THE 2 SCREWS FROM TOP COVER AND REMOVE IT.
- LOOSEN 2 PLASTIC STABILIZING SCREWS AT REAR OF BREWER.
- IN FRONT OF THE TANK IS A 13MM MALE HEX FITTING.
- USE A 13MM SOCKET, SHORT EXTENSION AND RATCHET AND CONNECT TO THE HEX FITTING.
- TURN THE HEX FITTING COUNTER-CLOCKWISE TO INCREASE THE HEIGHT.
- TURN THE HEX FITTING CLOCKWISE TO LOWER THE HEIGHT.
- ADJUST THE HEX FITTING UNTIL THE DISTANCE BETWEEN THE BASE AND BREW CHAMBER ALLOWS THE VESSEL TO BE INSERTED AND REMOVED COMFORTABLY.
- WHEN PROPER HEIGHT IS SET, TIGHTEN 2 PLASTIC STABILIZING SCREWS.

LEVELING THE UNIT

Verify that an adjustable leg is installed at each corner of the brewer. Set Brewer in its operating location. Level the Brewer. A spirit level should be placed on the top of the unit, at the edge, as a guide when making level adjustments. Level the unit from left to right and front to back by turning the adjustable feet. Be sure all four feet touch the counter to prevent tipping.

PLUMBER'S INSTALLATION INSTRUCTIONS

Brewer should be connected to a POTABLE, COLD WATER line. Flush water line before connecting to Brewer. DO NOT use a saddle valve with a self-piercing tap for the water line connection. Such a tap can become restricted by waterline debris. Remember to flush the line prior to installing. The brewer must be installed on a water line with average pressure between 30 PSI and 90 PSI. If your water pressure exceeds 90 PSI at anytime, a pressure regulator must be installed in the water supply line to limit the pressure to not more than 90 PSI in order to avoid damage to lines and solenoid. A water shut-off valve should be installed on the incoming water line in a convenient location (Use a low restriction type valve, such as a 1/4-turn ball valve, to avoid loss of water flow thru the valve. NSF requires that the brewer be able to be moved for cleaning underneath. A flex line or loops of copper tubing will satisfy this requirement.

NOTE: Make sure the brew basket is in place and an empty vessel is under the brew basket.

INSTALLATION:

- STEP 1: Connect water line to brewer.
- STEP 2: Turn the power switch ON (located on the back panel of the brewer). The control switch will beep twice.
- STEP 3: The water tank will begin to fill and the LCD will display "FILLING", it will then change to "HEATING", and finally (when the temperature reaches the set brewing temperature) to "GREAT COFFEE READY TO BREW".
- STEP 4: Once the LCD displays "READY TO BREW", you may press any brew switch to set the amount to brew. During the brew you may press any brew switch once to CANCEL.

NOTE: If the initial fill up takes longer than 100 seconds, the display will read "ERR NO WATER PRB"; this is to protect the solenoid. To correct this error, simply turn the brewer off and then back on to reset it.

PROGRAMMING:

- STEP 1: Press and hold the 1st brew switch for 6 SECONDS, 2 BEEPS will sound and the LCD will display "PROGRAM".
- STEP 2: Press the brew switch (#1, 2 or 3) you want to program.
- STEP 3: The brewer will begin dispensing water. The LCD will display the volume of water being dispensed in ounces.
- STEP 4: You can press and release any brew switch to add in a 15 SECOND pause, press the brew switch again to continue the water fill. Up to 8 pauses can be programmed per brew switch. (We STRONGLY recommend the first pause time be programmed at 5oz.) If you want to program without any pauses, skip STEP 4.
- STEP 5: When the desired volume is reached, press and release the brew switch to stop dispensing. Then press and hold for 4 SECONDS to save the program. 2 BEEPS will sound to confirm.
- STEP 6: Repeat STEPS 1-5 for each brew switch you want to program.

A SAMPLE PROGRAM FOLLOWS:

MILD: 1 pause at 5 oz. then continue to 64 oz.

REG: 1 pause at 5 oz., 1 pause at 30 oz. then continue to 63 oz.

BOLD: 1 pause at 5 oz., 1 pause at 25 oz., 1 pause at 50 oz. then continue to 62 oz.

For computer programming software see website www.brewtekbrewers.com download link.

IMPORTANT:

To enable the installer to make a quality installation and to minimize installation time, the following suggestions and tests should be done before the actual unit installation is started:

CAUTION: EQUIPMENT DAMAGE

DO NOT plug in or energize this appliance until all Installation Instructions are read and followed. Damage to the Brewer will occur if these instructions are not followed.

CAUTION: UNSTABLE EQUIPMENT HAZARD

It is very important for safety and for proper operation that the brewer is level and stable when standing in its final operating position. Provided adjustable, non-skid legs must be installed at each corner of the unit. Failure to do so will result in movement of the brewer which can cause personal injury and/or damage to brewer.

NOTE: Water supply inlet line must meet certain minimum criteria to insure successful operation of the brewer. Brew-Tek recommends 1/4" copper tubing for installation of less than 10 feet and 3/8" for more than 10 feet from a 1/2" water supply line.
NOTE: This equipment must be installed in compliance with all applicable federal, state and local plumbing codes and ordinances.

WARNING: SHOCK HAZARD

Brewer must be properly grounded to prevent possible shock hazard. DO NOT assume a plumbing line will provide such a ground. Electrical shock will cause death or serious injury.

IMPORTANT:

Do not connect brewer to electrical power until the tank is filled with water. Pour water into the pour-over opening until water flows from the brew head.

IMPORTANT:

Supply power must match nameplate for voltage and phase. Connecting to the wrong voltage will damage the brewer or result in decreased performance. Such damage is not covered by warranty. In some areas, local codes require a back flow preventer (check valve) to be installed on the inlet water line. If a back flow preventer is used, you must install a water hammer arrester in the incoming line, between the back flow preventer and the brewer inlet, as far away from the brewer as space will allow. This will relieve the excessive back pressures that can cause faucet leaks and solenoid malfunctions.

ELECTRICIAN'S INSTALLATION INSTRUCTIONS

REFER TO ELECTRICAL SPECIFICATIONS - Page 1 Check the nameplate to determine correct electrical service required for the Brewer to be installed.

IMPORTANT:

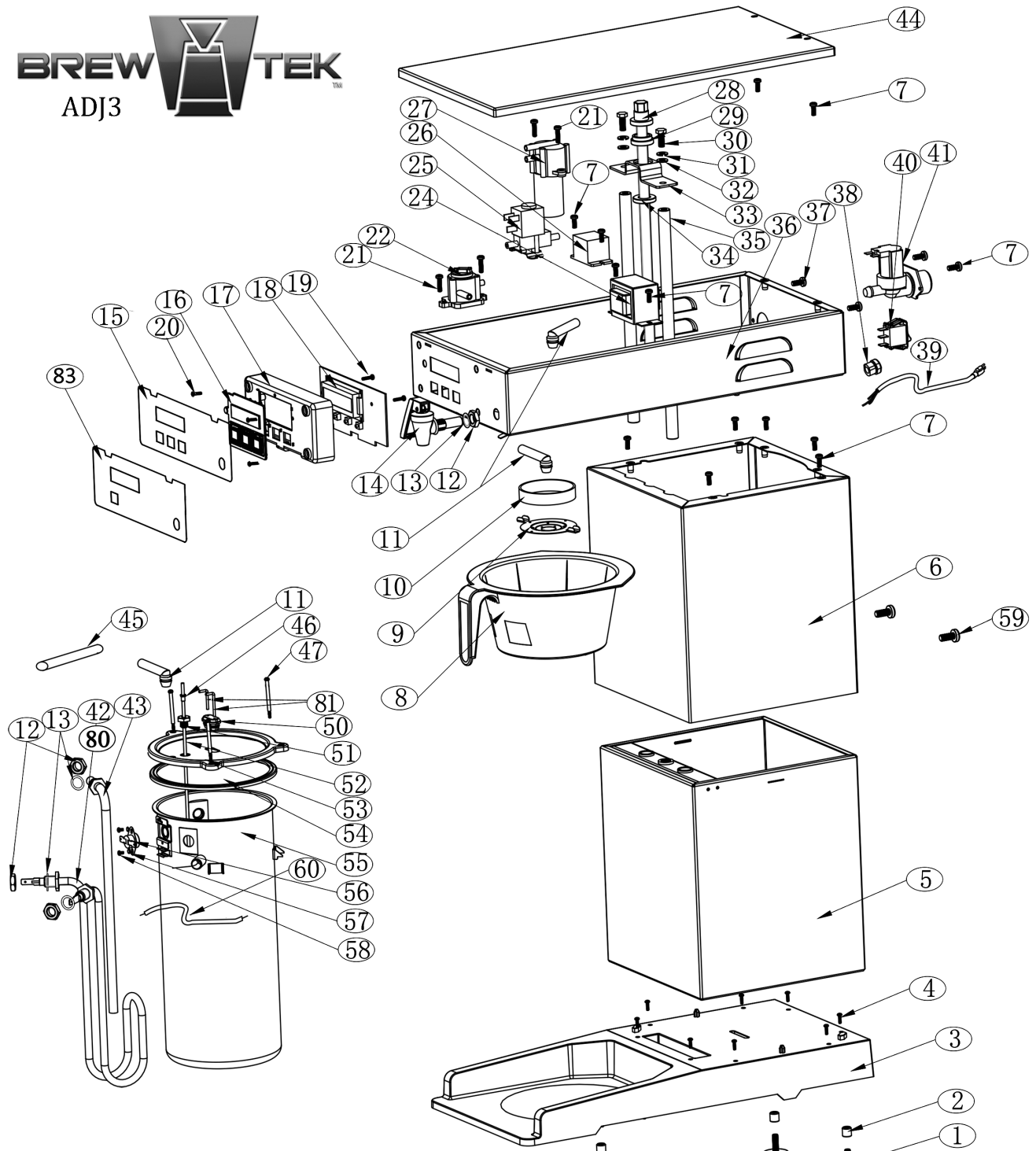
Before connecting to electricity, make sure automatic brewers are connected to the water supply. Equipped with a cord and plug, it requires a 115 - 125 volt 15 amp circuit (50/60 Hz, 2 wire plus ground, with NEMA 5-15R receptacle).

IMPORTANT:

The ground prong of the plug is part of a system designed to protect you from electrical shock in the event of internal damage. Never cut off the ground prong nor twist a blade to fit an existing receptacle. Contact a licensed electrician to install the proper circuit and receptacle.



PARTS DIAGRAM



Not Shown:
Silicone Tubes

- | | | | | | |
|--|--|----|---------------------------------|--|----|
| tank -outlet solenoid valve
gear pump-Flowmeter | | 74 | inlet solenoid valve- tank | | 76 |
| 5*9 silicon pipe length 140mm | | | 8*12 silicon pipe length 150mm | | |
| outlet solenoid valve- gear pump | | 75 | Tank-faucet | | 77 |
| 5*9 silicon pipe length 195mm | | | 10*14 silicon pipe length 290mm | | |
| | | | spring for inlet - tank tube | | 82 |



Part #	Description	Part #	Description
BTA001	ADJUSTABLE FOOT	BTA035	GUIDE POLE
BTA002	ADJUSTABLE FOOT INSERT NUT	BTA036	TOP HOUSING
BTA003	PLASTIC BASE	BTA037	FILTER HOUSING BOLT
BTA004	SCREW, PLASTIC BASE	BTA038	POWER CORD CLIP
BTA005	INSIDE HOUSING ASSEMBLY GROUP	BTA039	POWER CORD
BTA006	OUTSIDE HOUSING ASSEMBLY GROUP	BTA040	ROCKER SWITCH
BTA007	SCREW 4 X 10	BTA041	INLET SOLENOID VALVE
BTA008	BREW/BASKET	BTA042	ELEMENT, TANK 1700W 120V
BTA009	SPRAYHEAD, EMBOSSED	BTA043	S/S INLET PIPE
BTA010	SPRAYHEAD SILICONE GASKET	BTA044	TOP LID
BTA011	SPRAYHEAD INLET PIPE	BTA045	TANK VENT SILICONE PIPE
BTA012	HEX NUT, FAUCET & ELEMENT	BTA046	THERMISTER O-RING
BTA013	HEATER SILICONE SEAL	BTA047	WATER TANK ASSEMBLY SCREW
BTA014	FAUCET, LOW PRESSURE	BTA050	WATER LEVEL PROBE RUBBER SEAT
BTA015	ADJ3 LABEL 3 BUTTON	BTA051	NTC ASSEMBLY NUT
BTA016	LCD PLASTIC COVER	BTA052	THERMISTER
BTA017	PCB BOARD HOUSING	BTA053	TANK LID
BTA018	ADJ3 PROGRAMMABLE CIRCUIT BOARD	BTA054	TANK SILICONE SEAL
BTA019	SCREW, PCB BOARD TO BOARD HOUSING	BTA055	WATER TANK
BTA021	FLOWMETER & GEAR PUMP BOLT	BTA056	THERMOSTAT, HI LIMIT
BTA020	SCREW, FRONT PANEL TO BOARD HOUSING	BTA057	THERMOSTAT WASHER, HI LIMIT
BTA022	FLOWMETER	BTA058	THERMOSTAT SCREW, HI LIMIT
BTA024	TRANSFORMER	BTA059	PLASTIC SCREW, SECURING
BTA025	OUTLET SOLENOID VALVE W/BRACKET	BTA060	THERMAL FUSE
BTA026	RELAY	BTA074	SILICONE TUBE 140MM GP-FLOWMETER/WT-OS
BTA027	GEAR PUMP	BTA075	SILICONE TUBE 195MM OUTLET SOLENOID-GEAR PUMP
BTA028	ADJUSTABLE ROD W/13mm HEX	BTA076	SILICONE TUBE 150MM INLET SOLENOID-WATER TANK
BTA029	ADJUSTABLE ROD UPPER GASKET	BTA077	SILICONE TUBE 290MM FAUCET-WATER TANK
BTA030	GUIDE POLE BOLT	BTA080	ELEMENT, TANK 1400W **CANADA ONLY**
BTA031	GASKET, POLE GUIDE	BTA081	WATER LEVEL PROBES W/HARNES
BTA032	WASHER, GUIDE POLE	BTA082	SPRING FOR THE INLET SILICONE TUBE
BTA033	BRACKET, GUIDE POLE	BTA083	ADJ LABEL 1 BUTTON
BTA034	ADJUSTABLE ROD LOWER GASKET	BTA084	OWNER'S MANUAL

IMPORTANT:**START-UP**

For initial start-up, or if the brewer has not been used for an extended period of time:

Be sure spray disk and brew gasket are properly installed in the brew head.

For automatic brewers, be sure the water supply is properly connected and the water supply valve is turned ON.

Plug the brewer into a receptacle, connect water line. Follow instructions on LED board. Once the tank is full of water, the LED board will display "Filling" then "Heating". The heating elements will begin heating the water in the tank. When the water has reached the proper temperature, the "READY TO BREW" message will glow.



BREWING COFFEE

CAUTION: BURN HAZARD

Exposed surfaces of the brewer, brew chamber and airpot or server may be HOT to the touch, and can cause serious burns.

CAUTION: BURN HAZARD

To avoid splashing or overflowing hot liquids, ALWAYS place an empty airpot or server under the brew chamber before starting the brew cycle. Failure to comply can cause serious burns.

CAUTION: BURN HAZARD

After a brew cycle, brew chamber contents are HOT. Remove the brew chamber and dispose of used grounds with care. Failure to comply can cause serious burns.

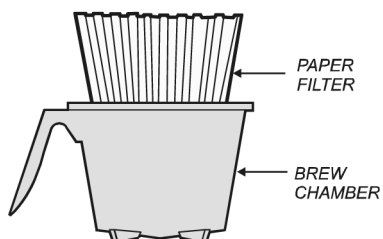
NOTE: Water for the hot water faucet is heated in a coil inside of the water tank. Use of the faucet will not affect the volume of water delivered for a brew. However, overuse of the faucet during a brew may lower the temperature of the brew water. Draw no more than one (1) cup of water at a time.

A. PREPARATION

Place one paper filter in the brew chamber. Add a pre-measured amount of fresh coffee grounds. Gently shake the brew chamber to level the bed of grounds. Slide the brew chamber into place under the brew head.

B. AUTOMATIC OPERATION

BE sure "READY TO BREW" message is displayed. Place the appropriate EMPTY airpot or thermal server in place under the brew chamber. Press the "BREW" switch. The solenoid will open for an amount of time determined by the timer setting, admitting a measured quantity of water into the basin. Water from the basin will displace a like amount of heated water from the tank. The hot water will be forced into the brew head where it will spray over the bed of grounds. Freshly brewed coffee will begin to fill the container under the brew chamber. When the flow and all dripping stops, the coffee is ready to serve. Discard the contents of the brew chamber and rinse it in a sink. When the "READY TO BREW" message is displayed, the brewer is ready for another brew cycle.



CLEANING INSTRUCTIONS

PROCEDURE: Clean Coffee Brewer

PRECAUTIONS: Disconnect brewer from electric power. Allow brewer to cool.

FREQUENCY: Daily

TOOLS: Mild Detergent, Clean Soft Cloth or Sponge Bristle Brush, Bottle Brush

1. Disconnect brewer from electric power. Allow brewer to cool before cleaning.
2. Remove airpot or thermal server.
3. Remove and empty brew chamber.
4. Remove the spray disk from the brew head (See figure 8): Press up on the spray disk ears, then turn the disk to the left to unlatch. Remove the gasket from inside the brew head.
5. Wipe inside of brew head and area around the brew head with a soft clean cloth or sponge moistened with clean water.
6. Wash the spray disk in a sink using warm water and a mild detergent. A bristle brush may be used to clear clogged spray holes. Rinse the spray disk with clean water and allow to air dry.
7. Wash the brew chamber in a sink using warm water and a mild detergent. A bristle brush may be used to clean the inside. Rinse with clean water and allow to air dry.
8. Wipe the exterior of the brewer with a soft clean cloth or sponge moistened with clean water.
10. Reinstall the gasket INSIDE the brew head, then reinstall the spray disk.
11. Reinstall the brew chamber.
12. DO NOT submerge airpots or thermal servers in water. Clean airpots and thermal servers by filling with warm soapy water. Scrub the inside with a bottle brush. Empty and rinse with clean water. Wipe the exterior with a soft clean cloth or sponge moistened with clean water. Invert and allow to air dry.

Procedure is complete

CAUTION: BURN HAZARD

Brewing and serving temperatures of coffee are extremely hot. Hot coffee will cause serious skin burns.

CAUTION: SHOCK HAZARD

Do not submerge or immerse brewer in water.

IMPORTANT:
DO NOT use steel wool, sharp objects, or caustic, abrasive or chlorinated cleansers to clean the brewer, airpots or thermal servers.

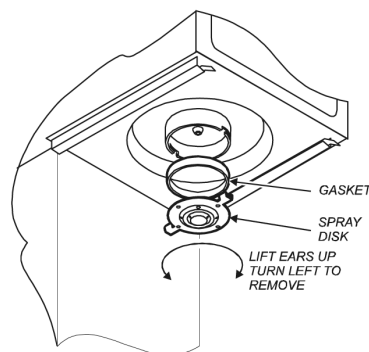


Fig. 8 Cleaning